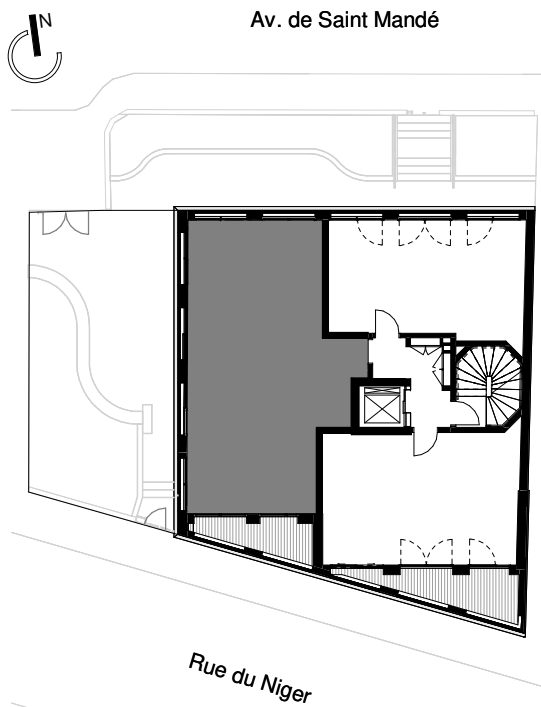
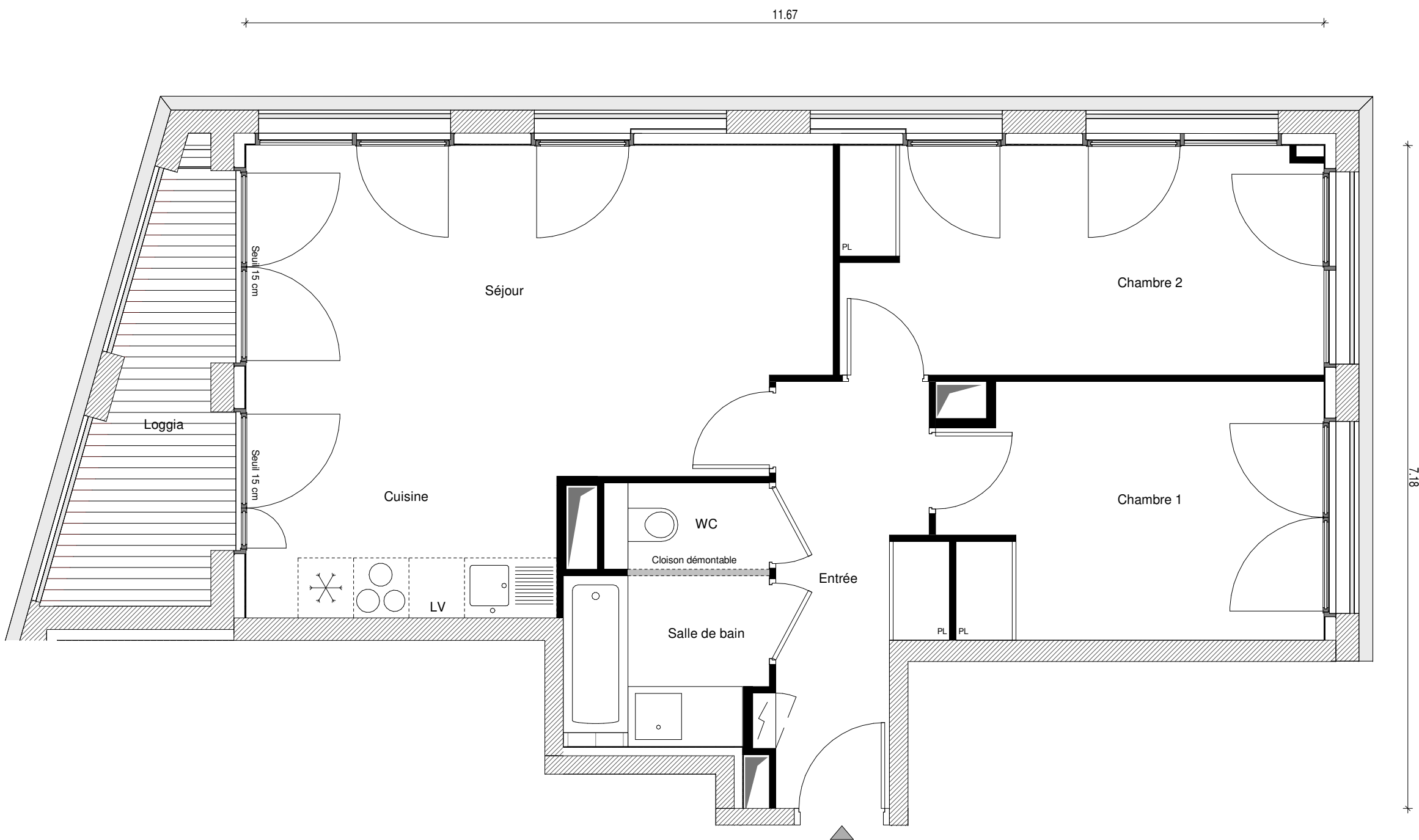


Passage Saint-Mandé



APPARTEMENT N°	03
TYPLOGIE	T3
NIVEAU	2
Entrée	7.09 m²
Séjour/Cuisine	27.17 m²
Chambre 1	11.14 m²
Chambre 2	12.92 m²
Salle de bain	3.94 m²
WC	1.67 m²
SURFACE HABITABLE	63.93 m²
Loggia	5.31 m²

La surface des pièces comprend la surface des placards